

MOBILE OUTREACH | BRISBANE, AUSTRALIA

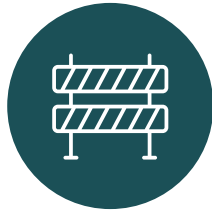
THE KOMBI CLINIC

The Kombi Clinic is a fun, roaming VW Kombi van that visits locations throughout Queensland, Australia, destigmatising hepatitis C (HCV) and offering access to testing and treatment.

WHY DID WE ESTABLISH THIS MODEL?



Some people find it hard to navigate traditional models of care



To break down barriers and simplify access to HCV treatment



To destigmatise HCV and make folks feel welcome, and less intimidated



To take the cure to the people, instead of waiting for them to come to us

WHO ACCESSES OUR SERVICE?



20-30

CLIENTS PER WEEK

- People who use drugs
- People receiving OAT/OST*
- People experiencing homelessness
- Indigenous people
- People who have been incarcerated
- People living with HIV

*OAT/OST: Opioid agonist therapy/Opioid substitution therapy

WHAT IS THE MODEL?



We take HCV testing and treatment to the streets, in Hawaiian shirts and a 1975 Kombi van.

On the first visit, we take a medical and social history, and pre-test counselling.

VISIT
1

We then do a FibroScan to check the liver.

Patients get a \$10-20 AUD supermarket voucher for getting tested, and we hand out beanies and blankets (made with love by little old lady knitting groups).

We also do a blood test with reflex HCV RNA, HBV & HIV, meaning only one blood draw is needed.

VISIT
2

Follow up via Telehealth or in person at the next Kombi Clinic. Patients with HCV start DAA therapy.

When it's available, we use a GeneXpert point-of-care RNA testing machine, which means that some patients can start treatment at visit 1.

VISIT
3

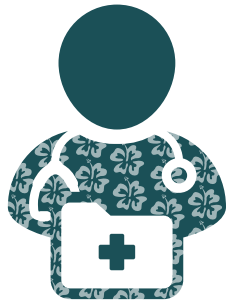
On-treatment support and follow-up for SVR12 (cure) is also conducted via telehealth or in person at the Kombi Clinic.

Patients with continuing risks for HCV are encouraged to return to the Kombi clinic for ongoing screening.

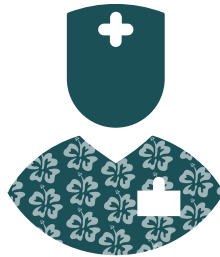
We high-5, we hug, we celebrate HCV cure with our patients!



WHO DELIVERS OUR SERVICES?



GP
n = 2



NURSE
n = 1



PHLEBOTOMIST
n = 1

HOW IS IT FUNDED?



- STATE GOVERNMENT
- COMPETITIVE GRANTS
- COMMUNITY AWARDS

"As GPs, we are also able to provide broader health care if required."

DR MATT YOUNG
KOMBI CLINIC



"We are laid back, safe and welcoming, and people are encouraged to just hang out. We hand out clothing, food, blankets and toiletries to anyone who needs it."

WHAT HCV SERVICES DO WE PROVIDE?



HCV education and information



Peer support



HCV testing



HCV diagnosis



HCV treatment



Liver disease assessment



Referral to other HCV services



Education for other health workers



A laugh, a chat, good vibes

WHAT INTERVENTIONS DO WE USE?



Peer support



Opt-out screening



On-site testing



Point-of-care HCV RNA testing



Reflex HCV RNA testing



FibroScan



Telehealth



Clinician reminders to prompt testing



Patient navigation



Financial incentives



"We rock up in a Kombi van, wear floral Hawaiian shirts, crank out rock and roll and adopt a very laid back vibe - nobody feels stigmatised or intimidated in this scene!"

"We believe there is no such thing as a 'hard to reach patient' but rather only 'hard to reach doctors'."

DR JOSS O'LOAN
KOMBI CLINIC

70+

OTHER PRACTITIONERS
HAVE NOW COME ALONG
FOR A RIDE IN THE KOMBI
CLINIC TO GET INSPIRED TO
SCREEN AND TREAT HCV IN
THEIR LOCAL AREA

WHAT WERE THE OUTCOMES?

2017-2020



25 LOCATIONS



22%
HOSTELS



20%
HOMELESS DROP
IN CENTRES



16%
DRUG REHAB
SERVICES



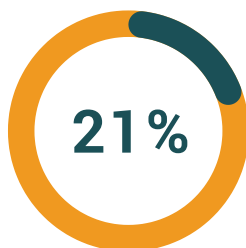
13%
PUBLIC
FESTIVALS



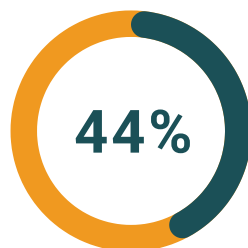
12%
COMMUNITY
CENTRES



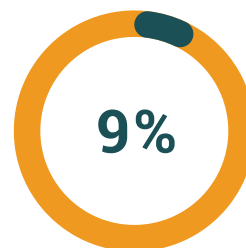
HISTORY OF
INJECTING
DRUG USE



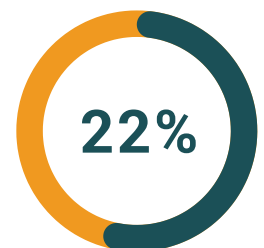
ON OST



EXPERIENCING
HOMELESSNESS



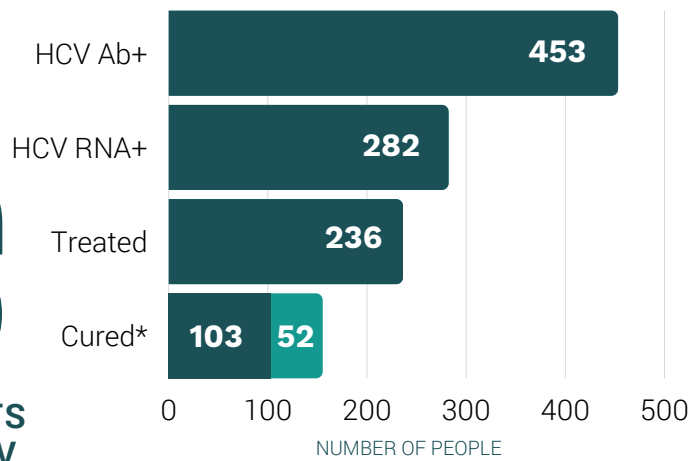
INCARCERATED
IN LAST 6
MONTHS



ABORIGINAL OR
TORRES STRAIT
ISLANDER



1,280
HIGH-RISK PATIENTS
SCREENED FOR HCV



*103 cured;
52 awaiting results or still on treatment;
2 virological failure;
79 lost to follow up.

WHAT WERE THE BARRIERS?

BARRIERS



People that don't like things being done differently.



Unbridled enthusiasm, meticulous planning and adaptability all trump negativity.



Funding for a Fibroscan machine, nurse wages and vouchers for patients.



Selling our product with persistence and passion inspires sponsorship and support.



Effects of 100% nylon Hawaiian shirts on sweat glands in a Queensland summer.



Good deodorant.



Not knowing if its going to work.



The knowledge that new models of care are essential for allowing disenfranchised access to HCV care.



The notorious unreliability of 1975 model Kombi vans.



Medical students available to push the kombi to the nearest service station and a good mechanic.

LOOKING TO IMPLEMENT A SIMILAR MODEL?

OUR TOP 5 KEY CONSIDERATIONS

1

FUNDING.

Work out how you will get funding to buy/lease a Kombi van, Fibroskan machine and pay staff.

2

STAFF.

Find staff ready to have a laugh, dress up in floral shirts and be laid back enough to engage ALL people from all walks of life.

3

COLLABORATION.

Find services that are supportive of hosting the clinic. Partnering with services who share your passion is essential.

4

FLEXIBILITY.

Start small with a few clinics and grow as time and resources allow.

5

AIR-CONDITIONING AND POWER STEERING.

...two things lacking in a 1975 Kombi van.